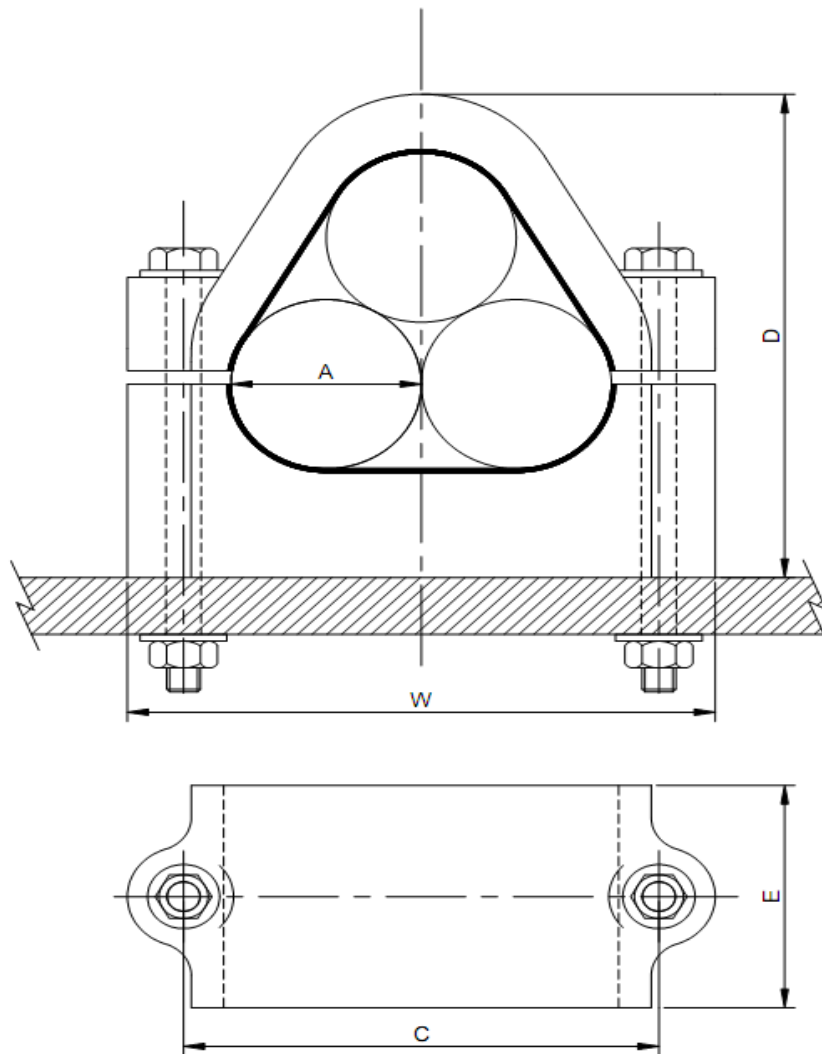


GLASS REINFORCED COMPOSITE CABLE CLEATS – TREFOIL [T-TYPE]

To support medium and high voltage power transmission cables, typically from 33 kV to 500 kV



Part number	Cable diameter A	Bolt size	C	D	E	W	Safe working load kN	Short term load kN
T69/M12/*	69	M12x180	190	218	100	235	5	25
T76/M12/*	74 to 78	M12x180	190	218	100	235	5	25
T96/M16/*	91 to 97	M16x180	274	275	100	328	7	35
T107/M16/*	107	M16x180	274	275	100	328	7	35

*Please specify outside cable diameter, A. (e.g. part number T76/M12/76 has an outside cable diameter of 76mm)

NOTES:

- Unless otherwise stated, all dimensions are in millimetres.
- Safe working load is applicable to a continuous load in any direction.
- Short term load is applicable to a short duration overload condition in any direction.
- The standard range loads are quoted at 25°C and should be derated linearly with temperature to 50% at +160°C.
- No reduction in strength occurs below +25°C.
- Cleats are constructed from **ASEplus** 1010 SWA glass reinforced composite material.
- Maximum initial torque for fixing bolts 20Nm.

Atlantic Supports **Engineering Ltd**



Intertech Engineering Pty. Ltd.

www.intertech-eng.com.au

Ph: +61 3 8770 5500
Fax: +61 3 9773 5666