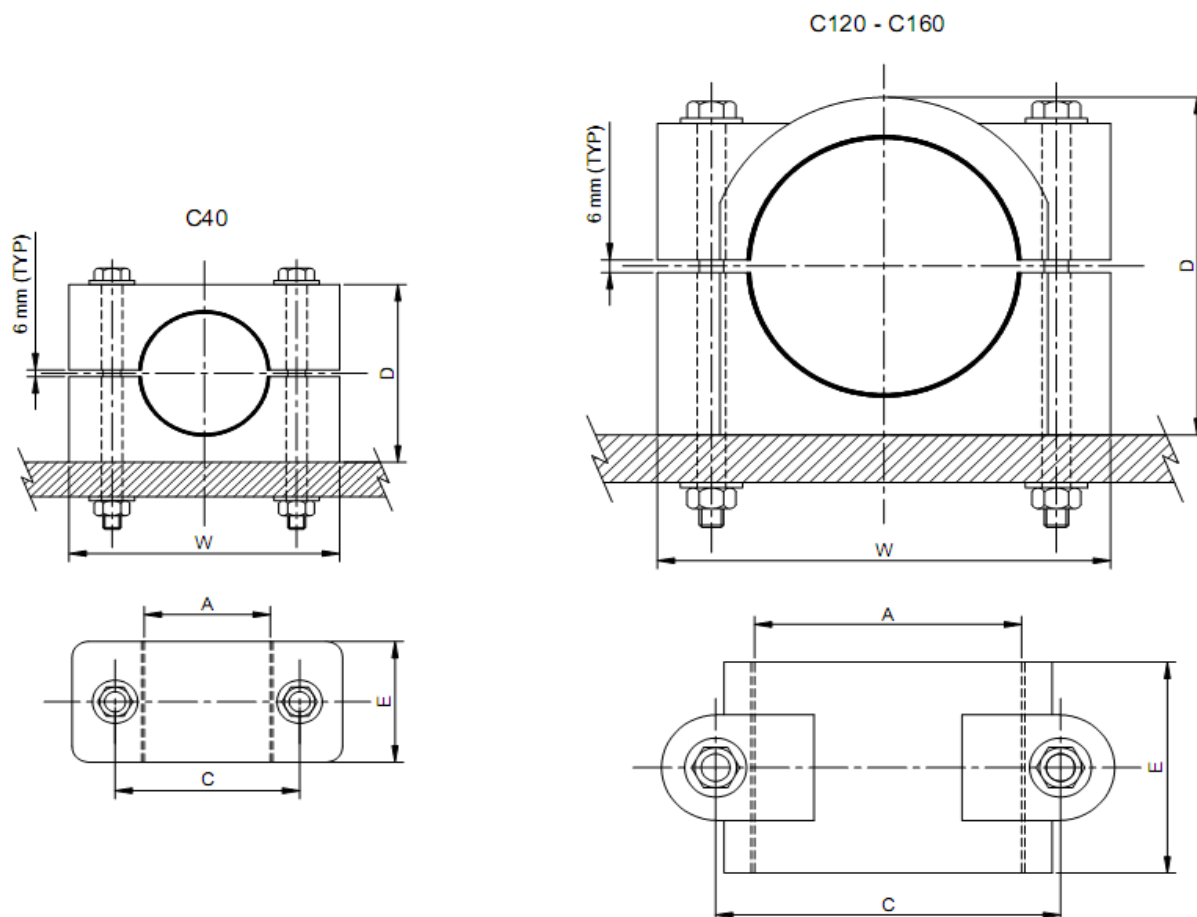




## GLASS REINFORCED COMPOSITE CABLE CLEATS [C-TYPE]

To support medium and high voltage power transmission cables, typically from 33 kV to 500 kV



Part number	Cable diameter A	Bolt size	C	D	E	W	Safe working load kN	Short term load kN
C40/M8/*	20 to 40	M8x85	54	60	30	80	2	10
C120/M12/*	101 to 120	M12x200	156	160	100	205	10	50
C120/M16/*	101 to 120	M16x200	156	160	100	205	10	50
C130/M12/*	121 to 130	M12x200	164	170	100	215	10	50
C130/M16/*	121 to 130	M16x200	164	170	100	215	10	50
C140/M16/*	131 to 140	M16x200	174	180	100	225	10	50
C160/M16/*	141 to 160	M16x200	190	200	100	230	10	50

\*Please specify outside cable diameter, A. (e.g. part number C120/M12/110 has an outside cable diameter of 110mm)

### NOTES:

- Unless otherwise stated, all dimensions are in millimetres.
- Safe working load is applicable to a continuous load in any direction.
- Short term load is applicable to a short duration overload condition in any direction.
- The standard range loads are quoted at 25°C and should be derated linearly with temperature to 50% at +160°C.
- No reduction in strength occurs below +25°C.
- Cleats are constructed from **ASEplas** 1010 SWA glass reinforced composite material.
- Maximum initial torque for fixing bolts 20Nm.

**Atlantic Supports Engineering Ltd**

**Intertech Engineering Pty. Ltd.**

Ph: +61 3 8770 5500  
Fax: +61 3 9773 5666

[www.intertech-eng.com.au](http://www.intertech-eng.com.au)